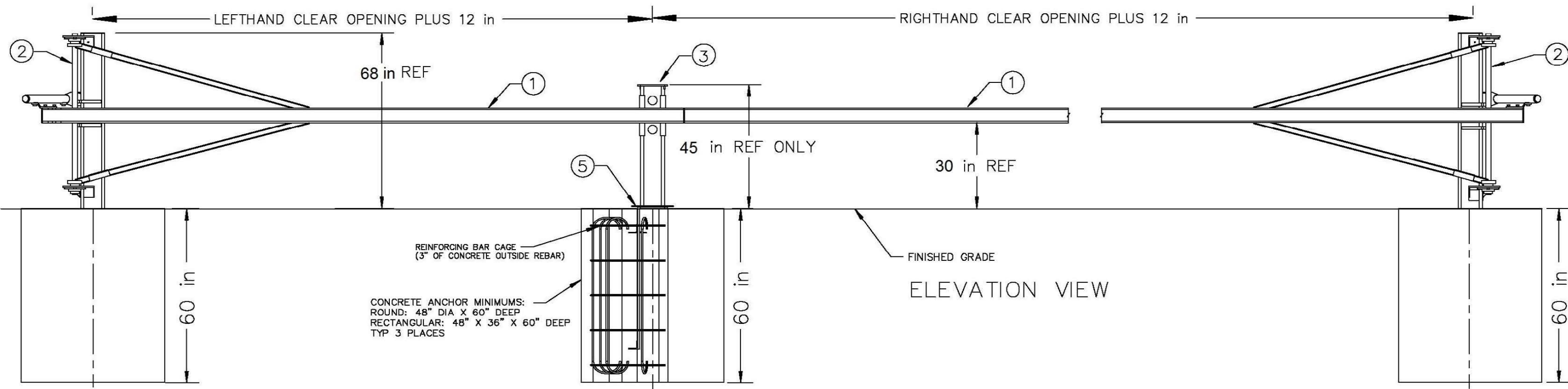
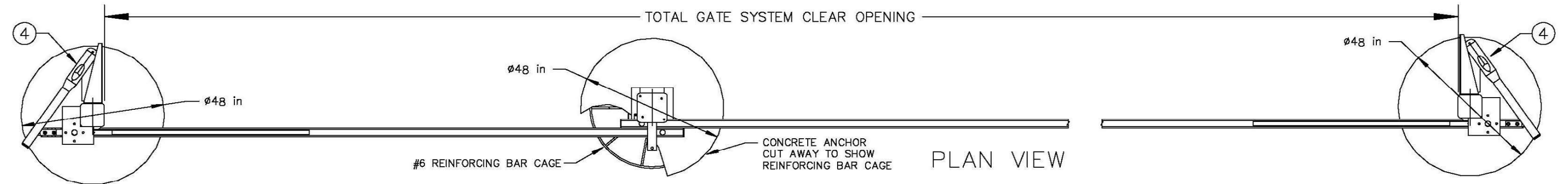


NOTE:  
 1. DIMENSIONS ON DRAWING ARE FOR REFERENCE ONLY. GATES WILL BE MANUFACTURED TO CUSTOMER'S CLEAR OPENING SPECIFICATION.  
 2. SEE DWG SI002 FOR ISOMETRIC VIEWS OF OPERATOR

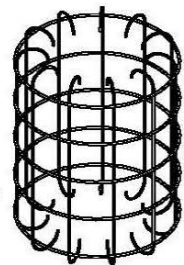
PART	DESC
1	GATE LEAF ASSEMBLY
2	OPERATOR SUPERPOST
3	RECEIVER SUPERPOST ASSEMBLY
4	OPERATOR
5	REMOVABLE SUPERPOST RECEPTACLE



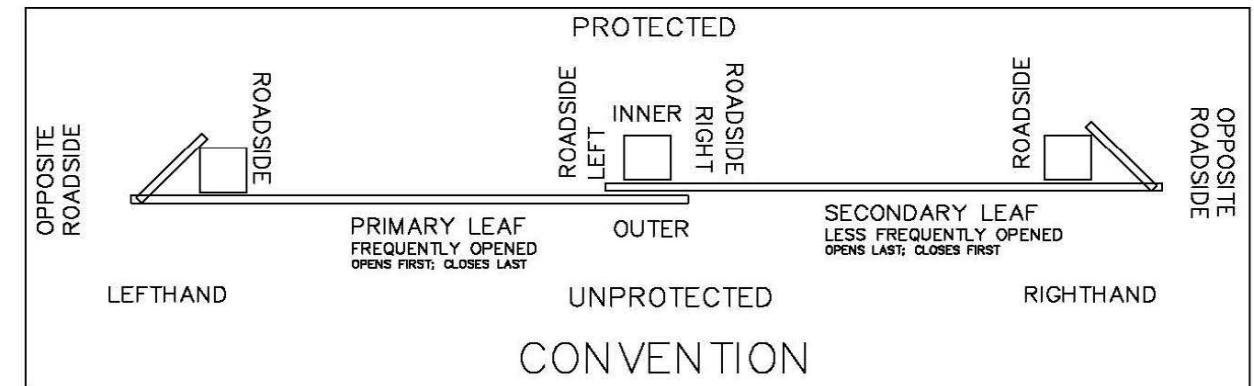
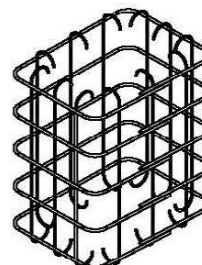
CONCRETE ANCHOR MINIMUMS:  
 ROUND: 48" DIA X 60" DEEP  
 RECTANGULAR: 48" X 36" X 60" DEEP  
 TYP 3 PLACES

01FEB18

- INSTALLER TO PROVIDE:  
 FOR ROUND ANCHOR FORMS
- 5 RINGS--42 IN DIA -- #6 REBAR SPACED 12 IN APART VERTICALLY
  - 13 VERTICALS-- 58 IN TALL-- #6 REBAR EVENLY SPACED ON INSIDE OF RINGS CENTERED VERTICALLY WITH ENDS BENT TOWARD CENTER ON STANDARD RADIUS
  - INSERT 2 TIE BARS--24 IN-- #6 REBAR PIECES CENTERED IN TWO BOTTOM HOLES OF POST BEFORE PLACEMENT IN FORM IF REBAR NOT PREVIOUSLY INSTALLED



- OR  
 FOR RECTANGULAR ANCHOR FORMS
- 5 RECT RINGS-- 42 IN X 30 IN-- #6 REBAR SPACED 12 IN APART VERTICALLY
  - 12 VERTICALS-- 58 IN TALL-- #6 REBAR EVENLY SPACED ON INSIDE OF RINGS CENTERED VERTICALLY WITH ENDS BENT TOWARD CENTER ON STANDARD RADIUS
  - INSERT 2 TIE BARS--24 IN-- #6 REBAR PIECES CENTERED IN TWO BOTTOM HOLES OF POST BEFORE PLACEMENT IN FORM IF REBAR NOT PREVIOUSLY INSTALLED



NO	DATE	REVISION	BY	CHK	APPR	CLIENT APPR
0	01FEB18	ORIGINAL ISSUE	MLK	JWA	JWA	PM APPR

PREPARED BY	KUNEMAN	01FEB18
CHECKED BY	HORNSTRA	01FEB18
DISCIPL APPR	ANDERSON	01FEB18
INTERFACE CK		



JOB NAME	SWING ARM GATE DOUBLE LEAF CSP-DF-2.3.1.2
----------	---

SHEET TITLE	PRODUCT ILLUSTRATION
-------------	----------------------

JOB NO	1807-3	DATE	01FEB18
SCALE	NONE	REV NO	0
		DWG NO	SI002 D