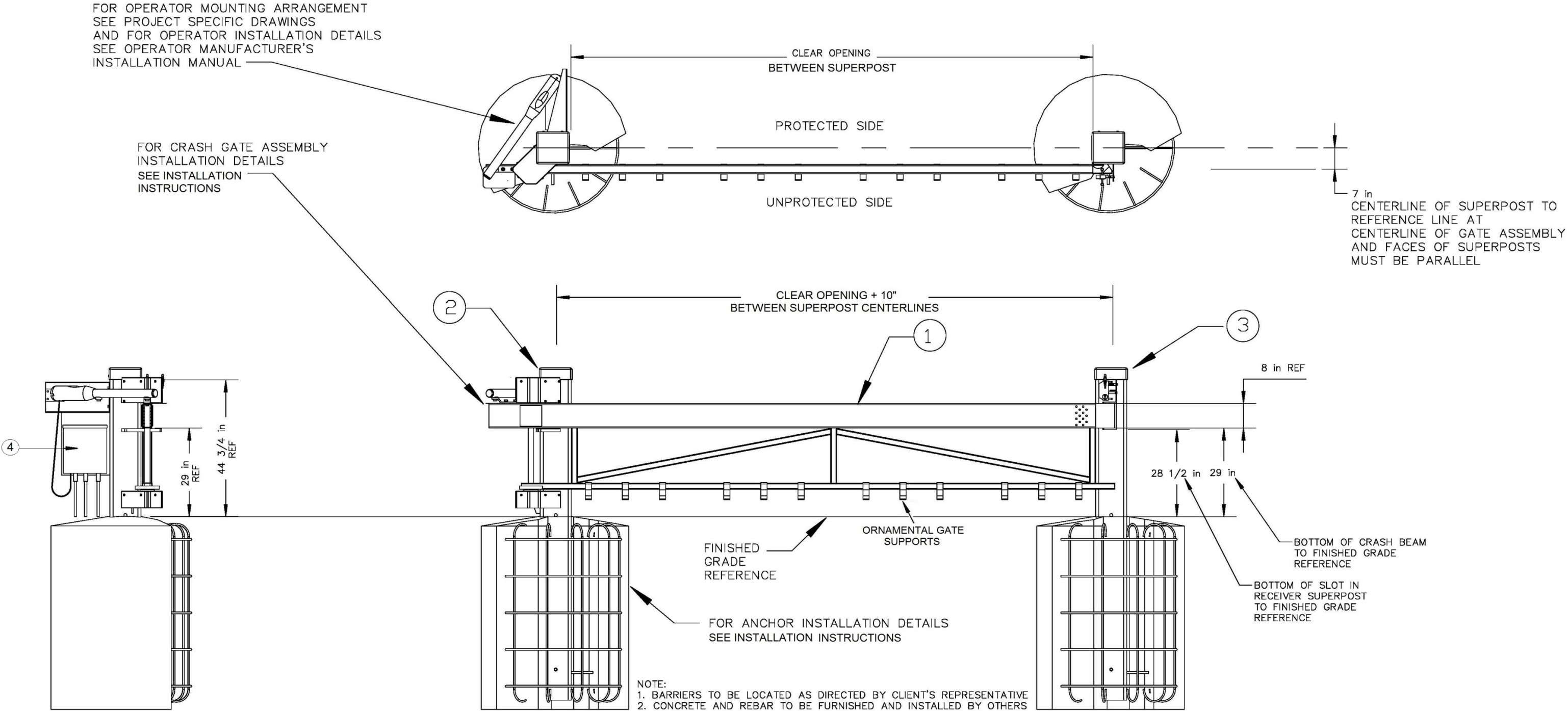


INSTALLATION NOTES:

1. BARRIER WILL BE DELIVERED AS FIVE MAJOR ASSEMBLIES  
(OPERATOR SUPERPOST, RECEIVER SUPERPOST, CRASH GATE, OPERATOR, AND PARTS PALLET)
2. FINAL DISTANCE BETWEEN SUPERPOST IS ESTABLISHED  
BY INSTALLING OPERATOR SUPERPOST THEN MOUNTING GATE, THEN INSTALLING RECEIVER SUPERPOST
3. PLACE AND SECURE SUPERPOST ASSEMBLIES
4. INSTALL OPERATOR BRACKET AND OPERATOR AS SHOWN IN THE DRAWINGS  
AND THE OPERATOR MANUFACTURER'S INSTALLATION GUIDE
5. CHECK ALL ALIGNMENTS BEFORE PLACING CONCRETE
6. ALL CONCRETE IS TO HAVE A MINIMUM OF 3000 PSI COMPRESSIVE STRENGTH PER ASTM C-39  
AND IS TO BE VIBRATED IN PLACE TO ELIMINATE ENTRAINED AIR
7. FINISH CONCRETE SURFACE AND ADJACENT AREA TO MATCH OWNER'S REQUIREMENTS
8. SEE I, O, & M MANUAL FOR FINAL ASSEMBLY INSTRUCTIONS

PART	DESCRIPTION
1	CRASH GATE ASSEMBLY
2	OPERATOR SUPERPOST ASSEMBLY
3	RECEIVER SUPERPOST ASSEMBLY
4	OPERATOR ASSEMBLY



					PREPARED BY	KUNEMAN	01FEB18
					CHECKED BY	ANDERSON	01FEB18
					DISCIPL APPR	ANDERSON	01FEB18
					INTERFACE CK		
0	01FEB18	ORIGINAL ISSUE		MLK	JWA	JWA	PM APPR
NO	DATE	REVISION		BY	CK	APPR	CLIENT APPR



JOB NAME	SUPER SWING GATE WITH OPERATOR AND CONTROLS	SHEET TITLE	PRODUCT ILLUSTRATION LEFT HAND GATE SHOWN	JOB NO	1807-3	DATE	01FEB18
				SCALE	NONE	REV NO	0
						DWG NO	SI002
	CSP-DF 2.2.3.1						